

Parent Information Booklet

2022

*Summary of parent contributions
and other important dates*



Mornington
Secondary College



RESPECT



COMMUNITY



ACHIEVEMENT

2022 PARENT INFORMATION BOOKLET

TABLE OF CONTENTS

2022 PARENT INFORMATION BOOKLET	2
<u>Contributions Schedule Explained</u>	<u>5</u>
Curriculum Contributions	5
Other Contributions.....	5
Extra-Curricular Items and Activities	6
Refunds.....	6
Financial Support for Families	7
Payment Methods.....	7
Camps, excursions and incursions.....	7
Credits on your Account	7
Suggested Parent Payment Dates for 2022	7
<u>Extra- Curricular Activities</u>	<u>8</u>
Activities.....	8
Instrumental Music Program.....	8
Ensembles	8
Cost of the Lessons	8
Music Camp/Workshops.....	8
Enrolling in the program	8
<u>Course Confirmation for 2022</u>	<u>9</u>
Glossary of terms:.....	11
Why youth mental health matters:	11
What The Resilience Project delivers:	11
Year 7.....	13
Year 7 Subjects	14
Year 8.....	16
Year 8 Subjects	17
Year 9.....	19
Year 9 Subjects	20
Year 10.....	23
Year 10 Subjects	24
Year 11.....	27
Year 11 Subjects	28
Year 12.....	32
Year 12 Subjects	33
<u>General Information</u>	<u>38</u>
College Contacts	38
For enquiries regarding payments.....	38
Parent Compass passwords resets	38
IT Support	38
College Policies	38
Student Absences.....	38
Term Dates 2022	39

School Bus Program - 2022 Application	40
College Website.....	40
DET Contacts.....	41
Exiting or not returning to Mornington Secondary College in 2022	41
School Council Approval	43



CONTRIBUTIONS SCHEDULE EXPLAINED

Curriculum Contributions

Mornington Secondary College is looking forward to another great year of teaching and learning and would like to advise you of Mornington Secondary College's voluntary financial contributions for 2022.

Schools provide students with free instruction to fulfil the standard Victorian curriculum and we want to assure you that all contributions are voluntary. Nevertheless, the ongoing support of our families ensures that our school can offer the best possible education and support for our students. We want to thank you for all your support, whether that's through fundraising or volunteering your time. This has made a huge difference to our school and the programs we can offer.

- ✓ subsidises the cost of classroom consumables and resources
 - Art supplies eg paint, paint brushes, papers, crayons, clay and general art and craft activities
 - Food Technology ingredients – flour, sugar, fruit, vegetables, etc
 - Science experiment supplies and equipment used in practical classes
 - Woodwork, Textiles and Technology materials – fabrics, wood, robotics, nails, glue and associated consumables
- ✓ Photocopying for all subjects
 - Handouts, samples of texts, tests, exams
- ✓ Class sets of books and resources used in subjects such as English and Maths

For further information on the Department's Parent Payments Policy please see a one-page overview on our website under Policies.

Other Contributions

Other contributions for non-curriculum items and activities that relate to the school's functions and objectives.

We continue to welcome your voluntary contributions to support our school.

You can make a general voluntary contribution that goes towards all of our school's important priorities for 2022 as well as providing additional activities and services for all students.

E.g., College Building Fund, Wellbeing & Chaplaincy Funds, First Aid Equipment Fund, Sports Equipment & Squads Fund, Student Services.

In 2021 your support provided the following

- ✓ First aid Equipment Fund
 - All equipment and resources used in this area was funded by your contributions
 - We were able to buy appropriate storage with locks to ensure safe housing of medications, and other first aid equipment
- ✓ Wellbeing & Chaplaincy Funds
 - Breakfast Club consumables
 - Helps to support the programs delivered in the wellbeing area
 - Purchase appropriate storage for donated second-hand uniforms
- ✓ College Building Fund
 - Breakfast Club moved to wellbeing area with garden tables and chairs, and upgrades to kitchen and servery areas
 - Picnic tables for the Years 8, 9 and 12 areas
- ✓ Sporting Equipment Fund
 - Badminton equipment
 - Athletics equipment – eg shot puts, cones, discus
 - Equipment for the Basketball squads
 - Netballs
- ✓ Building & Garden improvement projects

- Stage 1 of the Wellbeing Garden
- Updated furniture throughout the College
- Year 11 and 12 Centres were updated with furniture and building works
- New doors and windows throughout the college which were needed to prevent leaks
- Improvements to the pool
- Bus Bay improvement including concrete and safety rails
- Retaining walls for gardens
- Replacement carpets
- New ride on lawn mower as our old mower could no longer be repaired
- New Extractors for the Technology area
- ✓ Your Student Services contributions
 - Allows us to offer a broad curriculum that ensures your son or daughter has access to an engaging and inclusive schooling life.
 - It subsidises the costs associated with Compass parent/student portal
 - It subsidises the costs associated with the two school mini-buses
 - It subsidises the costs associated with the swimming pool operation
 - It subsidises the costs associated with general maintenance of buildings, equipment and grounds

Alternatively, you can make a voluntary contribution to any of the specific priorities outlined in the course confirmation.

Your son/daughter will not be disadvantaged if you do not make a voluntary contribution. All records of voluntary contributions are kept confidential as well as your decision about whether to make a contribution or not.

Extra-Curricular Items and Activities

Mornington Secondary College offers a range of items and activities that enhance or broaden the schooling experience of students and are above and beyond what the school provides in order to deliver the Curriculum. These are provided on a user-pays basis.

Examples of this would be

- ✓ Extracurricular camps or excursions
- ✓ Music Lessons
- ✓ Edrolo at the senior years
- ✓ Other software that enhances the experience – see each year level for details

Refunds

Parent requests for refunds are subject to the discretion of the school and made on a case-by-case basis. Refunds will be provided where the school deems it is reasonable and fair to do so, taking into consideration whether a cost has been incurred, the Department's Parent Payment Policy and Guidance, Financial Help for Families Policy and any other relevant information.

This policy, together with all policies are available on the College website.

Yours Sincerely



Linda Stanton
Principal



Colin Mason
School Council President

Financial Support for Families

We understand that some families may experience financial difficulty and we offer a range of support options. This includes:

- the Camps, Sports and Excursions Fund
- Flexible Payment options
- Centrelink payments
- Other tailored arrangements
- Saver Plus Programs

For a confidential discussion about accessing these services, or if you would like to discuss alternative payment arrangements, please contact main office, where Erin Dixon (Accounts Receivable) or Wendy Parkinson (Business Manager) will be able to help you.

Contact details: Phone No: 5970 0200 or email your enquiry to

AccountsReceivable@mornsc.vic.edu.au

Payment Methods

- Via Compass Payment Centre
- Cash or EFTPOS tendered at the general office – receipt will be given
- Bpay
- Other arrangements discussed with the parent

Camps, excursions and incursions

In 2022, camps, excursions and incursions will be promoted via the Compass event module, as we confirm each event can take place. Each event will require parent consent and payment. You will be prompted for payment details online. We will attempt to allow at least 4 – 8 weeks' notice for parent payments. If you have CSEF and wish to use it to pay for these events, please select the CSEF option on the event payment page or email AccountsReceivable@mornsc.vic.edu.au and we will amend payment to that event.

Credits on your Account

If you have credits on your school account you can use them towards events by selecting the credit option on the payment page when an event appears for payment on Compass. (You may have credits due to cancelled events or activities in the past).

You may wish to use the credits on your account towards your 2022 contributions. Please view the contribution options in the Payment Centre of Compass and advise where you would like the funds allocated. Email your preferences to AccountsReceivable@mornsc.vic.edu.au or the College email Mornington.sc@education.vic.gov.au. We can then reduce the contribution amount on Compass for you. Alternatively, you can contact the Office and we can discuss what your contributions will be and the different payment options we offer.

Suggested Parent Contribution Dates for 2022

First instalment 25% of total	Sunday 12 th December 2021
Second Instalment 25% of total	Thursday 13 th January 2022
Third Instalment 25% of total	Thursday 10 th February 2022
Fourth instalment 25% of total	Thursday 8 th March 2022

Payment in full	Friday 28 th January 2022
-----------------	--------------------------------------

To discuss alternative payment arrangements, please contact the general office via email AccountsReceivable@mornsc.vic.edu.au Erin Dixon (Accounts Receivable) or Wendy Parkinson (Business Manager).

EXTRA- CURRICULAR ACTIVITIES

Activities

Mornington Secondary College offers a wide range of extracurricular activities to promote connectedness and inclusion to the College. Students of all capabilities and across all year levels are able to participate in these extracurricular activities. We encourage all students to become involved in one or more of these activities during their time at Mornington Secondary College.

Aerobics Squad
Human Powered Vehicle
Soccer Squad
Fit Club
Junior House Challenge
Math Investigation Club
Environmental Club

Football Squad
Basketball Squad
Cricket Squad
Swimming Squad
Choir
Strength and Amplify
Breakfast Club

Athletics Squad
Netball Squad
Band
Language Club
College Production
Art Club
Chess Club

Clubs are provided free of charge using donations from parents and outside agencies.

Instrumental Music Program



Ensembles

True to our motto “BORN TO PERFORM”, students are nurtured towards their first public performances. Choir and band rehearsals are an essential part of a student’s musical development and are integral to the Mornington Secondary College Instrumental Music (Ensemble) Program. Our experienced teachers are themselves professional musicians and thus offer much expertise and inspiration to our students.

Cost of the Lessons

Participation in the Instrumental Music (Ensemble) program is \$200 per year, inclusive of weekly lessons and ensemble rehearsals.

Hire of Instrument is \$200 per year plus \$200 Bond, available for Wind and Brass instruments.

Music Camp/Workshops

Students in the Instrumental Music program are invited to attend our enormously fun and productive music camps and workshops with their ensembles. We usually perform in the community on the final day. Please note additional costs will apply.

Enrolling in the program

Please complete the application form, available from this link.

https://forms.office.com/Pages/DesignPage.aspx?fragment=FormId%3D_J6e8AX8Y0au_RNkwVS2cxOM1u605BpNonhC17CqTINURU9BNjBTTkdVSEdUUIVPOEY2NFZaQkhCNS4u%26Token%3Dea4385ad883e413c83cf19be0a3b0c7e

Once completed, the music staff will be in contact with you to coordinate your lessons.

COMPASS PAYMENT CENTRE FOR 2022

This is the process for confirming your son/daughter's subjects for next year. (formerly course confirmation). If the subjects are correct, please proceed to payments in the Payments Centre, if subjects are not correct, your son/daughter will need to see their current Year Level Coordinator.

The Payment Centre explained.

All contributions will now show in the Payment Centre, including, excursions and incursions, bus contributions, etc

For more information and video instructions – see our website and newsletters.

Compass

Welcome back, Chelsea
Magic P-12 College

Kirsty FLEMINGTON

- Profile (Attendance, Schedule, Reports)
- Send email to Kirsty's teachers
- Add Attendance Note (Approved Absence/Late)
- View Academic Reports
- Order Photos
- Book Parent Student Teacher Conference

2 overdue learning tasks

Payments Centre
Did you know that payments can be made through Compass for school fees, events, and voluntary contributions?
[Click here for more information](#)

MasterCard | VISA | No surcharge

Parent Student Teacher Conference
Term 3 Parent Teacher Interviews
[Click here for booking](#)

Parent Student Teacher Conference
Course Counselling Year 10 into Year 11
[Click here for booking](#)

Attendance: Attendance Note Required
Kirsty was recorded as 'not present' or 'late' without explanation.
[Click here for more information](#)

Click the notification and it will take you to the Payment Centre page. You will see a section for Contributions. Clicking on a listed contribution will open it.

Action Centre Events Volunteering Payments

Event

Kirsty FLEMINGTON
1 events

Zoo Excursion
Wednesday, November 10th 2021, 9:00 am
Tuesday, December 28th 2021, 3:30 pm

After consent due date Due 10/11/2021 \$5.00

Contributions

Account: Kirsty FLEMINGTON

2022 School Contributions Action Required \$250.00

[View more information regarding your historical payments and existing payment plans](#)

You will see the items and can edit the amounts they want to contribute in this transaction. You will be able to choose to pay via instalments. You can then add your card details in the appropriate section to process a payment.

If you have made a part contribution, you will be able to click into the overall contribution again at a later date and make a further contribution against it if you would like. It will show the updated outstanding amount.

2022 School Contributions

Thank you for contributing to 2022

Curriculum Resources - Kirsty FLEMINGTON This contribution goes towards resources required for Year 8 students	\$ 200	\$200.00
Curriculum Contributions - Kirsty FLEMINGTON -lock -books -stuff	\$ 50	\$50.00
Library Contribution - Kirsty FLEMINGTON Voluntary Contribution / Donation	\$ 0	\$50.00

Payment Method

New credit card 



Card number 

Full name

MM / YY

CVC

Save this card

Payment

Total of all charges (inclusive of discounts)	\$350.00
Less amount already paid	-\$100.00
Balance	\$250.00
Amount to pay	\$250.00

- Pay in full now
 Pay in instalments

Process

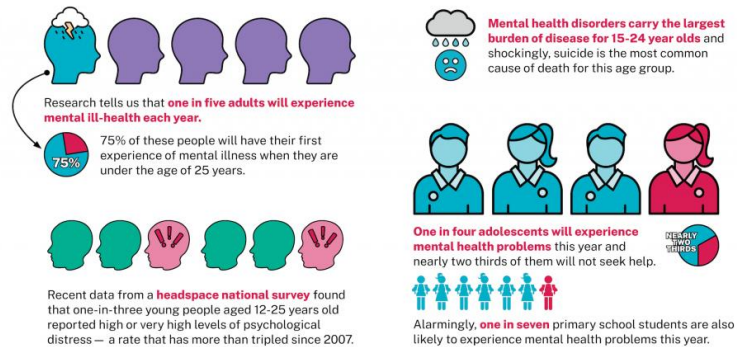
We use CompassPay.com as our payment processing gateway. In clicking the relevant "Confirm and Pay" button to the right, you agree for your credit card to be charged by CompassPay.com on behalf of your school. You understand that the amount charged will be the "Total Due" or amount indicated to the right. Refunds for cancelled online orders will be made to your Compass Balance regardless of original method of payment. This payment and use of this website is in alignment with the Compass School Manager terms and conditions of use available at <http://compass.edu.au/policy/>.

Glossary of terms:

The Resilience Project

This project will be delivered in home group for each student. This project will be delivered in home group for each student. Each student will receive a journal.

Why youth mental health matters:



What The Resilience Project delivers:

These statistics drive our commitment to teach positive strategies to help people build happiness and resilience. We are especially committed to delivering programs in early learning centres as well as primary and secondary schools – settings the recent [Victorian Royal Commission](#) and [Productivity Commission](#) revealed as having the biggest unmet need.

The program for schools has been designed by teachers for teachers and has been evaluated by the University of Melbourne.

Through presentations, student curriculum, teacher resources and digital content, The Resilience Project's Education Programs support mental health in the classroom, staffroom and family home.

The research is clear; the more positive emotion you experience, the more resilient you will be. For that reason, we focus on three key pillars that have been proven to cultivate positive emotion; **Gratitude**, **Empathy** and **Mindfulness** (GEM), with **Emotional Literacy** being a foundational skill to practise these strategies.

Classroom consumable materials

All items that your son/daughter consumes in the classroom

- paint and craft materials for art/design technology
- cooking ingredients for food subjects
- materials for technology practical classes
- curriculum related activities
- Compass ID Card
 - Used for identification – scanning on and off buses, to borrow equipment or books
- Printing Credit – monies used for printing at the College – eg printing of student work or tasks
- School Sports Affiliation Contributions – each student is charged by School Sport Victoria for affiliation fee. Monies are used to support the delivery of sports at Regional and State levels.

Software subscriptions – (Extra-Curricular Items and Activities)

Subscriptions to software that is used in the class that enhances or broadens the schooling experience of students and are above and beyond what the school provides for free to deliver the Curriculum. These are provided on a user-pays basis.

Some examples are:

- Pre and post testing
- E Texts

- Online subscriptions to learning activities (to enhance the learning in the curriculum, e.g. Mathspace and Essential Assessment)
- Edrolo Standard combines interactive video theory, formative assessment, exam practice, and analytics. This program forms part of items and activities that enhance or broaden the schooling experience of students and are above and beyond what the school provides for free to deliver the Curriculum. These are provided on a user-pays basis.
- Literacy Planet - is a breakthrough English literacy platform that helps teachers to meet the literacy needs of each student in their classroom by providing some engaging strategies.

VCAL

In school activities (Curriculum activities)

Activities directly related to outcomes

For example, community service activities, guest speakers, cooking lessons, incursions

Integrated Projects (Curriculum activities)

Community based projects such as Scope.

Class related projects that cover all Learning Outcomes

Year 7

Curriculum Contributions - items and activities that students use, or participate in, to access the Curriculum		Suggested Amount
Compass Access Card (ID Card)		\$10.00
Printing Credit – Start up		\$5.00
IT Security Software		\$20.00
School Sports Affiliation Contributions		\$7.00
The Resilience Project – See Glossary		\$22.00
Events, Excursions, Incursions. Items and activities that enhance or broaden the schooling experience of students and are above and beyond what the school provides for free to deliver the Curriculum. These are provided on a user-pays basis.		
Events will be published throughout the year via Compass event. Allow 4 -8 weeks' notice for payment. Each event will have full details, including the educational purpose. For those families with CSEF monies, you will be able to allocate these funds. If you have a credit on your account, you can nominate to use those funds. Or if you would like to set up a payment plan please don't hesitate to email. AccountsReceivable@mornsc.vic.edu.au		See Compass events
Other Contributions for non-curriculum items and activities that relate to the school's functions and objectives.		Suggested
Locker Charge the combination locks are strongly encouraged to ensure that your son/daughter's items (e.g. Phones) are safe and secure whilst at School. If you bring your own, please ensure that it is an approved combination lock.		\$15.00
Student Services Contribution College Council invites each student to pay a student services levy to subsidise the costs associated with Compass parent/student portal, swimming pool operations, the school mini-buses and hiring of a second bus, maintenance of buildings and grounds. (See page 4 for full details)		\$125.00
Sporting Equipment and Squad Fund	All monies are used to purchase sports equipment and uniform for all our college teams. E.g., Basketballs, tennis equipment, soccer and footballs, uniforms for our Squads.	You choose how much you would like to donate to each sector.
College Building Fund	All monies are used to fund building projects directed by School Council, for continuous improvements of our facilities	
College Chaplaincy Fund and College Wellbeing Fund	All monies are used to fund Chaplaincy and Well Being projects within the College. For example, Breakfast club, Spartans (Year 7 Boys), Strength (Year 8 Boys), Empower (Year 7 Girls), Radiate (Year 8 Girls), Respectful Relationships Group (Year 9 & 10) Renovator (Year 10 Boys and Girls) Recipe for Success (Year 7-12)	
College First Aid Equipment Fund	All monies are used to fund equipment and the maintenance of our First Aid area. In 2021 we refitted the first aid area. .	
State Schools Relief	State Schools Relief is a not-for-profit organisation that supports the needs of underprivileged Victorian government school students by providing them with new school uniforms, footwear and educational resources during times of vulnerability.	
Other Activities		
Camp – Year 7	As more information becomes available, we will inform the Year 7 parents as to the status of the camp at this year level	To be advised

Year 7 Subjects

Summary of Subjects offered at Year 7

2022 Contribution		Category		
Subject	Description	Curriculum Contributions	Extra-Curricular Items and Activities	Grand Total
Drama	Classroom consumable materials	\$5.00	\$	5.00
	Photocopying	\$3.00	\$	3.00
Drama Total		\$8.00	\$	8.00
English or English Advanced	Classroom consumable materials	\$7.00	\$	7.00
	Photocopying	\$9.00	\$	9.00
	Software Subscription - Literacy Planet		\$15.00	\$ 15.00
	Software Subscription - News websites online		\$26.00	\$ 26.00
English or English Advanced Total		\$16.00	\$41.00	\$ 57.00
Health and Physical Education	Classroom consumable materials	\$3.00	\$	3.00
	Photocopying	\$2.00	\$	2.00
Health and Physical Education Total		\$5.00	\$	5.00
Humanities	Classroom consumable materials	\$5.00	\$	5.00
	Photocopying	\$8.00	\$	8.00
Humanities Total		\$13.00	\$	13.00
Japanese	Classroom consumable materials	\$5.00	\$	5.00
	Photocopying	\$8.00	\$	8.00
Japanese Total		\$13.00	\$	13.00
Mathematics	Classroom consumable materials	\$5.00	\$	5.00
	Photocopying	\$11.00	\$	11.00
	Software Subscription - Essential Assessment		\$9.50	\$ 9.50
Mathematics Total		\$16.00	\$9.50	\$ 25.50
Product Design - Wood	Classroom consumable materials	\$50.00	\$	50.00
	Photocopying	\$2.50	\$	2.50
Product Design - Wood Total		\$52.50	\$	52.50

Science	Classroom consumable materials	\$10.00	\$	10.00
	Photocopying	\$11.00	\$	11.00
Science Total		\$21.00	\$	21.00
Textiles	Classroom consumable materials	\$40.00	\$	40.00
	Photocopying	\$8.00	\$	8.00
Textiles Total		\$48.00	\$	48.00
Visual Art	Classroom consumable materials	\$50.00	\$	50.00
	Photocopying	\$3.00	\$	3.00
Visual Art Total		\$53.00	\$	53.00

Year 8

Curriculum Contributions - items and activities that students use, or participate in, to access the Curriculum		Suggested Amount
Compass Access Card (ID Card)		\$10.00
IT Security Software		\$20.00
School Sports Affiliation Contributions		\$7.00
The Resilience Project		\$22.00
Events, Excursions, Incursions. Items and activities that enhance or broaden the schooling experience of students and are above and beyond what the school provides for free to deliver the Curriculum. These are provided on a user-pays basis.		
Events will be published throughout the year via Compass event. Allow 4 -8 weeks' notice for payment. Each event will have full details, including the educational purpose. For those families with CSEF monies, you will be able to allocate these funds. If you have a credit on your account, you can nominate to use those funds. Or if you would like to set up a payment plan please don't hesitate to email. AccountsReceivable@mornsc.vic.edu.au		See Compass events
Other contributions for non-curriculum items and activities that relate to the school's functions and objectives.		Suggested
Locker Charge the combination locks are strongly encouraged to ensure that your son/daughter's items (e.g. Phones) are safe and secure whilst at School. If you bring your own, please ensure that it is an approved combination lock.		\$15.00
Student Services Contribution College Council invites each student to pay a student services levy to subsidise the costs associated with Compass parent/student portal, swimming pool operations, the school mini-buses and hiring of a second bus, maintenance of buildings and grounds. (See page 4 for full details)		\$125.00
Sporting Equipment Fund	All monies are used to purchase sports equipment and uniform for all our college teams. E.g., Basketballs, tennis equipment, soccer and footballs, uniforms for our Squads.	You choose how much you would like to donate to each sector.
College Building Fund	All monies are used to fund building projects directed by School Council, for continuous improvements of our facilities	
College Chaplaincy Fund and College Wellbeing Fund	All monies are used to fund Chaplaincy and Well Being projects within the College. For example, Breakfast club, Spartans (Year 7 Boys), Strength (Year 8 Boys), Empower (Year 7 Girls), Radiate (Year 8 Girls), Respectful Relationships Group (Year 9 & 10) Renovator (Year 10 Boys and Girls) Recipe for Success (Year 7-12)	
College First Aid Equipment Fund	All monies are used to fund equipment and the maintenance of our First Aid area. In 2021 we refitted the first aid area. .	
State Schools Relief	State Schools Relief is a not-for-profit organisation that supports the needs of underprivileged Victorian government school students by providing them with new school uniforms, footwear and educational resources during times of vulnerability.	

Year 8 Subjects

Summary of Subjects offered at Year 8

2022 Contribution		Category		
Subject	Description	Curriculum Contributions	Extra-Curricular Items and Activities	Grand Total
Contemporary Art	Classroom consumable materials	\$55.00		\$ 55.00
	Hire of Equipment	\$0.00		\$ -
	Photocopying	\$3.00		\$ 3.00
Contemporary Art Total		\$58.00		\$ 58.00
English or English Advanced	Classroom consumable materials	\$7.00		\$ 7.00
	Photocopying	\$9.00		\$ 9.00
	Software Subscription - Literacy Planet		\$15.00	\$ 15.00
	Software Subscription - News websites online		\$26.00	\$ 26.00
English or English Advanced Total		\$16.00	\$41.00	\$ 57.00
Food Studies	Classroom consumable materials	\$74.75		\$ 74.75
	Photocopying	\$4.50		\$ 4.50
Food Studies Total		\$79.25		\$ 79.25
Health and Physical Education	Classroom consumable materials	\$3.00		\$ 3.00
	Photocopying	\$2.00		\$ 2.00
Health and Physical Education Total		\$5.00		\$ 5.00
Humanities	Classroom consumable materials	\$5.00		\$ 5.00
	Photocopying	\$8.00		\$ 8.00
Humanities Total		\$13.00		\$ 13.00
Indonesian	Classroom consumable materials	\$5.00		\$ 5.00
	Photocopying	\$8.00		\$ 8.00
Indonesian Total		\$13.00		\$ 13.00
Japanese	Classroom consumable materials	\$5.00		\$ 5.00
	Photocopying	\$8.00		\$ 8.00
Japanese Total		\$13.00		\$ 13.00
Mathematics	Classroom consumable materials	\$5.00		\$ 5.00
	Photocopying	\$11.00		\$ 11.00

	Software Subscription - Essential Assessment		\$9.50	\$	9.50
Mathematics Total		\$16.00	\$9.50	\$	25.50
Product Design - Wood	Classroom consumable materials	\$70.00		\$	70.00
	Photocopying	\$2.50		\$	2.50
Product Design - Wood Total		\$72.50		\$	72.50
Science	Classroom consumable materials	\$12.00		\$	12.00
	Photocopying	\$11.00		\$	11.00
Science Total		\$23.00		\$	23.00
Visual Art	Classroom consumable materials	\$55.00		\$	55.00
	Photocopying	\$3.00		\$	3.00
Visual Art Total		\$58.00		\$	58.00

Year 9

Curriculum Contributions - items and activities that students use, or participate in, to access the Curriculum		Suggested Amount
Compass Access Card (ID Card)		\$10.00
IT Security Software		\$20.00
School Sports Affiliation Contributions		\$7.00
The Resilience Project		\$22.00
Events, Excursions, Incursions. Items and activities that enhance or broaden the schooling experience of students and are above and beyond what the school provides for free to deliver the Curriculum. These are provided on a user-pays basis.		
Events will be published throughout the year via Compass event. Allow 4 -8 weeks' notice for payment. Each event will have full details, including the educational purpose. For those families with CSEF monies, you will be able to allocate these funds. If you have a credit on your account, you can nominate to use those funds. Or if you would like to set up a payment plan please don't hesitate to email. AccountsReceivable@mornsc.vic.edu.au		See Compass events
Other contributions for non-curriculum items and activities that relate to the school's functions and objectives.		Suggested
Locker Charge the combination locks are strongly encouraged to ensure that your son/daughter's items (e.g. Phones) are safe and secure whilst at School. If you bring your own, please ensure that it is an approved combination lock.		\$15.00
Student Services Contribution College Council invites each student to pay a student services levy to subsidise the costs associated with Compass parent/student portal, swimming pool operations, the school mini-buses and hiring of a second bus, maintenance of buildings and grounds. (See page 4 for full details)		\$125.00
Sporting Equipment Fund	All monies are used to purchase sports equipment and uniform for all our college teams. E.g., Basketballs, tennis equipment, soccer and footballs, uniforms for our Squads.	You choose how much you would like to donate to each sector.
College Building Fund	All monies are used to fund building projects directed by School Council, for continuous improvements of our facilities	
College Chaplaincy Fund and College Wellbeing Fund	All monies are used to fund Chaplaincy and Well Being projects within the College. For example, Breakfast club, Spartans (Year 7 Boys), Strength (Year 8 Boys), Empower (Year 7 Girls), Radiate (Year 8 Girls), Respectful Relationships Group (Year 9 & 10) Renovator (Year 10 Boys and Girls) Recipe for Success (Year 7-12)	
College First Aid Equipment Fund	All monies are used to fund equipment and the maintenance of our First Aid area. In 2021 we refitted the first aid area.	
State Schools Relief	State Schools Relief is a not-for-profit organisation that supports the needs of underprivileged Victorian government school students by providing them with new school uniforms, footwear and educational resources during times of vulnerability.	

Year 9 Subjects

Summary of Subjects offered at Year 9

2022 Contribution		Category		
Subject	Description	Curriculum Contributions	Extra-Curricular Items and Activities	Grand Total
Advanced Mathematics 9	Classroom consumable materials	\$5.00		\$ 5.00
	Photocopying	\$11.00		\$ 11.00
	Software Subscription - Essential Assessment		\$9.50	\$ 9.50
Advanced Mathematics 9 Total		\$16.00	\$9.50	\$ 25.50
Architecture and 3D Modelling	Classroom consumable materials	\$90.00		\$ 90.00
	Photocopying	\$10.00		\$ 10.00
Architecture and 3D Modelling Total		\$100.00		\$ 100.00
Café Catering	Classroom consumable materials	\$126.50		\$ 126.50
	Photocopying	\$4.50		\$ 4.50
Café Catering Total		\$131.00		\$ 131.00
Contemporary Art	Classroom consumable materials	\$25.00		\$ 25.00
	Hire of Equipment	\$40.00		\$ 40.00
	Photocopying	\$3.00		\$ 3.00
	Student printing credit		\$20.00	\$ 20.00
Contemporary Art Total		\$68.00	\$20.00	\$ 88.00
Creative Textiles	Classroom consumable materials	\$105.00		\$ 105.00
	Photocopying	\$10.00		\$ 10.00
Creative Textiles Total		\$115.00		\$ 115.00
Electronics and Robotics 9	Classroom consumable materials	\$135.00		\$ 135.00
	Photocopying	\$5.00		\$ 5.00
Electronics and Robotics 9 Total		\$140.00		\$ 140.00
English	Classroom consumable materials	\$7.00		\$ 7.00
	Photocopying	\$11.00		\$ 11.00
	Software Subscription - Literacy Planet		\$15.00	\$ 15.00
	Software Subscription - News websites online		\$26.00	\$ 26.00
	English Total		\$18.00	\$41.00

English Advanced	Classroom consumable materials	\$7.00		\$	7.00
	Photocopying	\$12.00		\$	12.00
	Software Subscription - Literacy Planet		\$15.00	\$	15.00
	Software Subscription - News websites online		\$26.00	\$	26.00
English Advanced Total		\$19.00	\$41.00	\$	60.00
Fantastic Fast Food	Classroom consumable materials	\$126.50		\$	126.50
	Photocopying	\$4.50		\$	4.50
Fantastic Fast Food Total		\$131.00		\$	131.00
Geography	Classroom consumable materials	\$5.00		\$	5.00
	Photocopying	\$8.00		\$	8.00
Geography Total		\$13.00		\$	13.00
Health	Classroom consumable materials	\$3.00		\$	3.00
	Photocopying	\$5.00		\$	5.00
Health Total		\$8.00		\$	8.00
History	Classroom consumable materials	\$5.00		\$	5.00
	Photocopying	\$8.00		\$	8.00
History Total		\$13.00		\$	13.00
Indonesian	Classroom consumable materials	\$10.00		\$	10.00
	Photocopying	\$7.00		\$	7.00
Indonesian Total		\$17.00		\$	17.00
Japanese	Classroom consumable materials	\$10.00		\$	10.00
	Photocopying	\$7.00		\$	7.00
Japanese Total		\$17.00		\$	17.00
Mathematics 9	Classroom consumable materials	\$5.00		\$	5.00
	Photocopying	\$11.00		\$	11.00
	Software Subscription - Essential Assessment		\$9.50	\$	9.50
Mathematics 9 Total		\$16.00	\$9.50	\$	25.50
Mind, Body and Movement	Classroom consumable materials	\$3.00		\$	3.00
	Photocopying	\$2.00		\$	2.00
Mind, Body and Movement Total		\$5.00		\$	5.00
Multi Material Product Design	Classroom consumable materials	\$130.00		\$	130.00
	Photocopying	\$2.50		\$	2.50
Multi Material Product Design Total		\$132.50		\$	132.50
Science	Classroom consumable materials	\$12.00		\$	12.00

	Photocopying	\$11.00	\$	11.00
Science Total		\$23.00	\$	23.00
Sports and Recreation	Classroom consumable materials	\$3.00	\$	3.00
	Photocopying	\$3.00	\$	3.00
Sports and Recreation Total		\$6.00	\$	6.00
Team Sports	Classroom consumable materials	\$3.00	\$	3.00
	Photocopying	\$5.00	\$	5.00
Team Sports Total		\$8.00	\$	8.00
Visual Art	Classroom consumable materials	\$60.00	\$	60.00
	Photocopying	\$3.00	\$	3.00
Visual Art Total		\$63.00	\$	63.00

Year 10

Curriculum Contributions - items and activities that students use, or participate in, to access the Curriculum		Suggested Amount
Compass Access Card (ID Card)		\$10.00
IT Security Software		\$20.00
School Sports Affiliation Contributions		\$7.00
The Resilience Project		\$22.00
Events, Excursions, Incursions. Items and activities that enhance or broaden the schooling experience of students and are above and beyond what the school provides for free to deliver the Curriculum. These are provided on a user-pays basis.		
Events will be published throughout the year via Compass event. Allow 4 -8 weeks' notice for payment. Each event will have full details, including the educational purpose. For those families with CSEF monies, you will be able to allocate these funds. If you have a credit on your account, you can nominate to use those funds. Or if you would like to set up a payment plan please don't hesitate to email. AccountsReceivable@mornsc.vic.edu.au		See Compass events
Other contributions for non-curriculum items and activities that relate to the school's functions and objectives.		Suggested
Locker Charge the combination locks are strongly encouraged to ensure that your son/daughter's items (e.g. Phones) are safe and secure whilst at School. If you bring your own, please ensure that it is an approved combination lock.		\$15.00
Student Services Contribution College Council invites each student to pay a student services levy to subsidise the costs associated with Compass parent/student portal, swimming pool operations, the school mini-buses and hiring of a second bus, maintenance of buildings and grounds. (See page 4 for full details)		\$125.00
Sporting Equipment Fund	All monies are used to purchase sports equipment and uniform for all our college teams. E.g., Basketballs, tennis equipment, soccer and footballs, uniforms for our Squads.	You choose how much you would like to donate to each sector.
College Building Fund	All monies are used to fund building projects directed by School Council, for continuous improvements of our facilities	
College Chaplaincy Fund and College Wellbeing Fund	All monies are used to fund Chaplaincy and Well Being projects within the College. For example, Breakfast club, Spartans (Year 7 Boys), Strength (Year 8 Boys), Empower (Year 7 Girls), Radiate (Year 8 Girls), Respectful Relationships Group (Year 9 & 10) Renovator (Year 10 Boys and Girls) Recipe for Success (Year 7-12)	
College First Aid Equipment Fund	All monies are used to fund equipment and the maintenance of our First Aid area. In 2021 we refitted the first aid area. .	
State Schools Relief	State Schools Relief is a not-for-profit organisation that supports the needs of underprivileged Victorian government school students by providing them with new school uniforms, footwear and educational resources during times of vulnerability.	

Year 10 Subjects

Summary of Subjects offered at Year 10

2022 Contribution		Category		
Subject	Description	Curriculum Contributions	Extra-Curricular Items and Activities	Grand Total
Advanced Mathematics 10	Classroom consumable materials	\$5.00		\$ 5.00
	Photocopying	\$11.00		\$ 11.00
	Software Subscription - Essential Assessment		\$9.50	\$ 9.50
Advanced Mathematics 10 Total		\$16.00	\$9.50	\$ 25.50
English	Classroom consumable materials	\$7.00		\$ 7.00
	Photocopying	\$11.00		\$ 11.00
	Software Subscription - News websites online		\$26.00	\$ 26.00
English Total		\$18.00	\$26.00	\$ 44.00
English Advanced	Classroom consumable materials	\$7.00		\$ 7.00
	Photocopying	\$12.00		\$ 12.00
	Software Subscription - News websites online		\$26.00	\$ 26.00
English Advanced Total		\$19.00	\$26.00	\$ 45.00
Food Studies	Classroom consumable materials	\$126.50		\$ 126.50
	Photocopying	\$4.50		\$ 4.50
Food Studies Total		\$131.00		\$ 131.00
Health and Human Development	Classroom consumable materials	\$3.00		\$ 3.00
	Photocopying	\$5.00		\$ 5.00
Health and Human Development Total		\$8.00		\$ 8.00
Humanities	Classroom consumable materials	\$5.00		\$ 5.00
	Photocopying	\$5.00		\$ 5.00
Humanities Total		\$10.00		\$ 10.00
Humanities Foundation	Classroom consumable materials	\$5.00		\$ 5.00
	Photocopying	\$5.00		\$ 5.00
Humanities Foundation Total		\$10.00		\$ 10.00
Indonesian	Classroom consumable materials	\$10.00		\$ 10.00
	Photocopying	\$7.00		\$ 7.00
Indonesian Total		\$17.00		\$ 17.00

Innovative Design	Classroom consumable materials	\$130.00		\$ 130.00
	Photocopying	\$2.50		\$ 2.50
Innovative Design Total		\$132.50		\$ 132.50
Japanese	Classroom consumable materials	\$10.00		\$ 10.00
	Photocopying	\$7.00		\$ 7.00
Japanese Total		\$17.00		\$ 17.00
Marine Science	Classroom consumable materials	\$25.00		\$ 25.00
	Photocopying	\$11.00		\$ 11.00
Marine Science Total		\$36.00		\$ 36.00
Marvellous Menus	Classroom consumable materials	\$126.50		\$ 126.50
	Photocopying	\$4.50		\$ 4.50
Marvellous Menus Total		\$131.00		\$ 131.00
Mathematics	Classroom consumable materials	\$5.00		\$ 5.00
	Photocopying	\$11.00		\$ 11.00
	Software Subscription - Essential Assessment		\$9.50	\$ 9.50
Mathematics Total		\$16.00	\$9.50	\$ 25.50
Media	Classroom consumable materials	\$55.00		\$ 55.00
	Hire of Equipment	\$25.00		\$ 25.00
	Photocopying	\$9.00		\$ 9.00
Media Total		\$89.00		\$ 89.00
Medical Forensics	Classroom consumable materials	\$15.00		\$ 15.00
	Photocopying	\$11.00		\$ 11.00
Medical Forensics Total		\$26.00		\$ 26.00
Mindworks	Classroom consumable materials	\$10.00		\$ 10.00
	Photocopying	\$11.00		\$ 11.00
Mindworks Total		\$21.00		\$ 21.00
Money Smarts	Classroom consumable materials	\$5.00		\$ 5.00
	Photocopying	\$5.00		\$ 5.00
Money Smarts Total		\$10.00		\$ 10.00
Outdoor and Environmental Studies	Classroom consumable materials	\$5.00		\$ 5.00
	Photocopying	\$17.00		\$ 17.00
Outdoor and Environmental Studies Total		\$22.00		\$ 22.00
Performing Art	Classroom consumable materials	\$5.00		\$ 5.00
	Photocopying	\$3.00		\$ 3.00
Performing Art Total		\$8.00		\$ 8.00
Physical Education	Classroom consumable materials	\$3.00		\$ 3.00
	Photocopying	\$8.00		\$ 8.00

Physical Education Total		\$11.00		\$ 11.00
Science	Classroom consumable materials	\$15.00		\$ 15.00
	Photocopying	\$11.00		\$ 11.00
Science Total		\$26.00		\$ 26.00
Science Foundation	Classroom consumable materials	\$15.00		\$ 15.00
	Photocopying	\$11.00		\$ 11.00
Science Foundation Total		\$26.00		\$ 26.00
Sports Education	Classroom consumable materials	\$3.00		\$ 3.00
	Photocopying	\$4.00		\$ 4.00
Sports Education Total		\$7.00		\$ 7.00
Studio Arts 10	Classroom consumable materials	\$60.00		\$ 60.00
	Hire of Equipment	\$40.00		\$ 40.00
	Photocopying	\$3.00		\$ 3.00
	Student printing credit		\$20.00	\$ 20.00
Studio Arts 10 Total		\$103.00	\$20.00	\$ 123.00
Systems Engineering 10	Classroom consumable materials	\$135.00		\$ 135.00
	Photocopying	\$5.00		\$ 5.00
Systems Engineering 10 Total		\$140.00		\$ 140.00
Textiles 10	Classroom consumable materials	\$105.00		\$ 105.00
	Photocopying	\$10.00		\$ 10.00
Textiles 10 Total		\$115.00		\$ 115.00
Visual Art	Classroom consumable materials	\$60.00		\$ 60.00
	Photocopying	\$3.00		\$ 3.00
Visual Art Total		\$63.00		\$ 63.00
Visual Communication Design	Classroom consumable materials	\$60.00		\$ 60.00
	Photocopying	\$15.00		\$ 15.00
	Student printing credit		\$5.00	\$ 5.00
Visual Communication Design Total		\$75.00	\$5.00	\$ 80.00

Year 11

Curriculum Contributions - items and activities that students use, or participate in, to access the Curriculum		Suggested Amount
Compass Access Card (ID Card)		\$10.00
IT Security Software		\$20.00
School Sports Affiliation Contributions		\$7.00
The Resilience Project		\$22.00
<p>Events, Excursions, Incursions. Items and activities that enhance or broaden the schooling experience of students and are above and beyond what the school provides for free to deliver the Curriculum. These are provided on a user-pays basis.</p>		
<p>Events will be published throughout the year via Compass event. Allow 4 -8 weeks' notice for payment. Each event will have full details, including the educational purpose. For those families with CSEF monies, you will be able to allocate these funds. If you have a credit on your account, you can nominate to use those funds. Or if you would like to set up a payment plan please don't hesitate to email. AccountsReceivable@mornsc.vic.edu.au</p>		See Compass events
Other contributions for non-curriculum items and activities that relate to the school's functions and objectives.		Suggested
Locker Charge the combination locks are strongly encouraged to ensure that your son/daughter's items (e.g. Phones) are safe and secure whilst at School. If you bring your own, please ensure that it is an approved combination lock.		\$15.00
<p>Student Services Contribution</p> <p>College Council invites each student to pay a student services levy to subsidise the costs associated with Compass parent/student portal, swimming pool operations, the school mini-buses and hiring of a second bus, maintenance of buildings and grounds. (See page 4 for full details)</p>		\$125.00
Sporting Equipment Fund	All monies are used to purchase sports equipment and uniform for all our college teams. E.g., Basketballs, tennis equipment, soccer and footballs, uniforms for our Squads.	You choose how much you would like to donate to each sector.
College Building Fund	All monies are used to fund building projects directed by School Council, for continuous improvements of our facilities	
College Chaplaincy Fund and College Wellbeing Fund	All monies are used to fund Chaplaincy and Well Being projects within the College. For example, Breakfast club, Spartans (Year 7 Boys), Strength (Year 8 Boys), Empower (Year 7 Girls), Radiate (Year 8 Girls), Respectful Relationships Group (Year 9 & 10) Renovator (Year 10 Boys and Girls) Recipe for Success (Year 7-12)	
College First Aid Equipment Fund	All monies are used to fund equipment and the maintenance of our First Aid area. In 2021 we refitted the first aid area.	
State Schools Relief	State Schools Relief is a not-for-profit organisation that supports the needs of underprivileged Victorian government school students by providing them with new school uniforms, footwear and educational resources during times of vulnerability.	

Year 11 Subjects

2022 Contribution		Category		
Subject	Description	Curriculum Contributions	Extra-Curricular Items and Activities	Grand Total
Accounting 1/2	Classroom consumable materials	\$5.00		\$ 5.00
	Photocopying	\$15.00		\$ 15.00
Accounting 1/2 Total		\$20.00		\$ 20.00
Art 1/2	Classroom consumable materials	\$90.00		\$ 90.00
	Photocopying	\$7.50		\$ 7.50
Art 1/2 Total		\$97.50		\$ 97.50
Biology 1/2	Classroom consumable materials	\$15.00		\$ 15.00
	Photocopying	\$15.00		\$ 15.00
	Software Subscription - Ed Rolo		\$25.00	\$ 25.00
Biology 1/2 Total		\$30.00	\$25.00	\$ 55.00
Business Management 1/2	Classroom consumable materials	\$5.00		\$ 5.00
	Photocopying	\$20.00		\$ 20.00
Business Management 1/2 Total		\$25.00		\$ 25.00
Chemistry 1/2	Classroom consumable materials	\$30.00		\$ 30.00
	Photocopying	\$15.00		\$ 15.00
	Software Subscription - Ed Rolo		\$25.00	\$ 25.00
Chemistry 1/2 Total		\$45.00	\$25.00	\$ 70.00
English 1/2	Classroom consumable materials	\$24.00		\$ 24.00
	Photocopying	\$25.00		\$ 25.00
	Software Subscription - Ed Rolo		\$25.00	\$ 25.00
English 1/2 Total		\$49.00	\$25.00	\$ 74.00
English Language 1/2	Classroom consumable materials	\$21.00		\$ 21.00
	Photocopying	\$25.00		\$ 25.00
English Language 1/2 Total		\$46.00		\$ 46.00
Environmental Science 1/2	Classroom consumable materials	\$30.00		\$ 30.00

	Photocopying	\$15.00	\$	15.00
Environmental Science 1/2				
Total		\$45.00	\$	45.00
Food Studies 1/2	Classroom consumable materials	\$241.50	\$	241.50
	Photocopying	\$5.00	\$	5.00
Food Studies 1/2 Total		\$246.50	\$	246.50
General Mathematics 1/2	Classroom consumable materials	\$8.00	\$	8.00
	Photocopying	\$15.00	\$	15.00
	Software Subscription - Ed Rolo		\$25.00	\$ 25.00
General Mathematics 1/2				
Total		\$23.00	\$25.00	\$ 48.00
Geography 1/2	Classroom consumable materials	\$5.00	\$	5.00
	Photocopying	\$15.00	\$	15.00
Geography 1/2 Total		\$20.00	\$	20.00
Health & Human Development 1/2	Classroom consumable materials	\$16.00	\$	16.00
	Photocopying	\$15.00	\$	15.00
	Software Subscription - Ed Rolo		\$25.00	\$ 25.00
Health & Human Development 1/2 Total		\$31.00	\$25.00	\$ 56.00
History 1/2	Classroom consumable materials	\$5.00	\$	5.00
	Photocopying	\$10.00	\$	10.00
History 1/2 Total		\$15.00	\$	15.00
Indonesian 1/2	Classroom consumable materials	\$10.00	\$	10.00
	Photocopying	\$20.00	\$	20.00
Indonesian 1/2 Total		\$30.00	\$	30.00
Japanese 1/2	Classroom consumable materials	\$10.00	\$	10.00
	Photocopying	\$20.00	\$	20.00
Japanese 1/2 Total		\$30.00	\$	30.00
Legal Studies 1/2	Classroom consumable materials	\$5.00	\$	5.00
	Photocopying	\$15.00	\$	15.00
Legal Studies 1/2 Total		\$20.00	\$	20.00
Literature 1/2	Classroom consumable materials	\$24.00	\$	24.00
	Photocopying	\$25.00	\$	25.00

Literature 1/2 Total		\$49.00		\$ 49.00
Mathematical Methods 1/2	Classroom consumable materials	\$8.00		\$ 8.00
	Photocopying	\$15.00		\$ 15.00
	Software Subscription - Ed Rolo		\$25.00	\$ 25.00
Mathematical Methods 1/2 Total		\$23.00	\$25.00	\$ 48.00
Media 1/2	Classroom consumable materials	\$60.00		\$ 60.00
	Hire of Equipment	\$20.00		\$ 20.00
	Photocopying	\$20.00		\$ 20.00
	Software Subscription - Ed Rolo		\$25.00	\$ 25.00
Media 1/2 Total		\$100.00	\$25.00	\$ 125.00
Music Performance	Classroom consumable materials	\$0.00		\$ -
	Photocopying	\$25.00		\$ 25.00
Music Performance Total		\$25.00		\$ 25.00
Outdoor Education 1/2	Classroom consumable materials	\$15.00		\$ 15.00
	Photocopying	\$25.00		\$ 25.00
Outdoor Education 1/2 Total		\$40.00		\$ 40.00
Physical Education 1/2	Classroom consumable materials	\$4.00		\$ 4.00
	Photocopying	\$3.00		\$ 3.00
	Software Subscription - Ed Rolo		\$25.00	\$ 25.00
Physical Education 1/2 Total		\$7.00	\$25.00	\$ 32.00
Physics 1/2	Classroom consumable materials	\$15.00		\$ 15.00
	Photocopying	\$15.00		\$ 15.00
	Software Subscription - Ed Rolo		\$25.00	\$ 25.00
Physics 1/2 Total		\$30.00	\$25.00	\$ 55.00
Product Design & Tech: Textiles 1/2	Classroom consumable materials	\$120.00		\$ 120.00
	Photocopying	\$15.00		\$ 15.00
Product Design & Tech: Textiles 1/2 Total		\$135.00		\$ 135.00
Product Design & Tech: Wood 1/2	Classroom consumable materials	\$215.00		\$ 215.00
	Photocopying	\$15.00		\$ 15.00
Product Design & Tech: Wood 1/2 Total		\$230.00		\$ 230.00

Psychology 1/2	Classroom consumable materials	\$10.00	\$	10.00
	Photocopying	\$15.00	\$	15.00
	Software Subscription - Ed Rolo		\$25.00	\$ 25.00
Psychology 1/2 Total		\$25.00	\$25.00	\$ 50.00
Specialist Mathematics 1/2	Classroom consumable materials	\$8.00	\$	8.00
	Photocopying	\$15.00	\$	15.00
	Software Subscription - Ed Rolo		\$25.00	\$ 25.00
Specialist Mathematics 1/2 Total		\$23.00	\$25.00	\$ 48.00
Studio Arts: 1/2	Classroom consumable materials	\$140.00	\$	140.00
	Hire of Equipment	\$60.00	\$	60.00
	Photocopying	\$7.50	\$	7.50
	Software Subscription - Ed Rolo		\$25.00	\$ 25.00
	Student printing credit		\$20.00	\$ 20.00
Studio Arts: 1/2 Total		\$207.50	\$45.00	\$ 252.50
Systems Engineering 1/2	Classroom consumable materials	\$230.00	\$	230.00
	Photocopying	\$15.00	\$	15.00
Systems Engineering 1/2 Total		\$245.00		\$ 245.00
Visual Communication 1/2	Classroom consumable materials	\$75.00	\$	75.00
	Photocopying	\$15.00	\$	15.00
	Software Subscription - Ed Rolo		\$25.00	\$ 25.00
	Student printing credit		\$20.00	\$ 20.00
Visual Communication 1/2 Total		\$90.00	\$45.00	\$ 135.00
Year 11 VCAL	Classroom consumable materials	\$15.00	\$	15.00
	In School Activities	\$70.00	\$	70.00
	Integrated Projects	\$50.00	\$	50.00
	Photocopying	\$15.00	\$	15.00
Year 11 VCAL Total		\$150.00		\$ 150.00

Year 12

Curriculum Contributions - items and activities that students use, or participate in, to access the Curriculum		Suggested Amount
Compass Access Card (ID Card)		\$10.00
IT Security Software		\$20.00
School Sports Affiliation Contributions		\$7.00
The Resilience Project		\$22.00
Events, Excursions, Incursions. Items and activities that enhance or broaden the schooling experience of students and are above and beyond what the school provides for free to deliver the Curriculum. These are provided on a user-pays basis.		
Events will be published throughout the year via Compass event. Allow 4 -8 weeks' notice for payment. Each event will have full details, including the educational purpose. For those families with CSEF monies, you will be able to allocate these funds. If you have a credit on your account, you can nominate to use those funds. Or if you would like to set up a payment plan please don't hesitate to email. AccountsReceivable@mornsc.vic.edu.au		See Compass events
Other contributions for non-curriculum items and activities that relate to the school's functions and objectives.		Suggested
Locker Charge the combination locks are strongly encouraged to ensure that your son/daughter's items (e.g. Phones) are safe and secure whilst at School. If you bring your own, please ensure that it is an approved combination lock.		\$15.00
Student Services Contribution College Council invites each student to pay a student services levy to subsidise the costs associated with Compass parent/student portal, swimming pool operations, the school mini-buses and hiring of a second bus, maintenance of buildings and grounds. (See page 4 for full details)		\$125.00
Sporting Equipment Fund	All monies are used to purchase sports equipment and uniform for all our college teams. E.g., Basketballs, tennis equipment, soccer and footballs, uniforms for our Squads.	You choose how much you would like to donate to each sector.
College Building Fund	All monies are used to fund building projects directed by School Council, for continuous improvements of our facilities	
College Chaplaincy Fund and College Wellbeing Fund	All monies are used to fund Chaplaincy and Well Being projects within the College. For example, Breakfast club, Spartans (Year 7 Boys), Strength (Year 8 Boys), Empower (Year 7 Girls), Radiate (Year 8 Girls), Respectful Relationships Group (Year 9 & 10) Renovator (Year 10 Boys and Girls) Recipe for Success (Year 7-12)	
College First Aid Equipment Fund	All monies are used to fund equipment and the maintenance of our First Aid area. In 2021 we refitted the first aid area. .	
State Schools Relief	State Schools Relief is a not-for-profit organisation that supports the needs of underprivileged Victorian government school students by providing them with new school uniforms, footwear and educational resources during times of vulnerability.	

Year 12 Subjects

2022 Contribution		Category		
Subject	Description	Curriculum Contributions	Extra-Curricular Items and Activities	Grand Total
Accounting 3/4	Classroom consumable materials	\$5.00		\$ 5.00
	Photocopying	\$15.00		\$ 15.00
	Software Subscription - Ed Rolo		\$25.00	\$ 25.00
Accounting 3/4 Total		\$20.00	\$25.00	\$ 45.00
Art 3/4	Classroom consumable materials	\$100.00		\$ 100.00
	Photocopying	\$10.00		\$ 10.00
	Software Subscription - Ed Rolo		\$0.00	\$ -
	Student printing credit		\$10.00	\$ 10.00
Art 3/4 Total		\$110.00	\$10.00	\$ 120.00
Biology 3/4	Classroom consumable materials	\$25.00		\$ 25.00
	Photocopying	\$15.00		\$ 15.00
	Software Subscription - Ed Rolo		\$25.00	\$ 25.00
Biology 3/4 Total		\$40.00	\$25.00	\$ 65.00
Business Management 3/4	Classroom consumable materials	\$5.00		\$ 5.00
	Photocopying	\$20.00		\$ 20.00
	Software Subscription - Ed Rolo		\$25.00	\$ 25.00
Business Management 3/4 Total		\$25.00	\$25.00	\$ 50.00
Chemistry 3/4	Classroom consumable materials	\$30.00		\$ 30.00
	Photocopying	\$15.00		\$ 15.00
	Software Subscription - Ed Rolo		\$25.00	\$ 25.00
Chemistry 3/4 Total		\$45.00	\$25.00	\$ 70.00
English 3/4	Classroom consumable materials	\$24.00		\$ 24.00
	Photocopying	\$25.00		\$ 25.00
	Software Subscription - Ed Rolo		\$25.00	\$ 25.00

English 3/4 Total		\$49.00	\$25.00	\$ 74.00
English Language 3/4	Classroom consumable materials	\$52.00		\$ 52.00
	Photocopying	\$30.00		\$ 30.00
English Language 3/4 Total		\$82.00		\$ 82.00
Environmental Science 3/4	Classroom consumable materials	\$30.00		\$ 30.00
	Photocopying	\$15.00		\$ 15.00
	Software Subscription - Ed Rolo		\$0.00	\$ -
Environmental Science 3/4 Total		\$45.00	\$0.00	\$ 45.00
Food Studies 3/4	Classroom consumable materials	\$207.00		\$ 207.00
	Photocopying	\$14.00		\$ 14.00
	Software Subscription - Ed Rolo		\$25.00	\$ 25.00
Food Studies 3/4 Total		\$221.00	\$25.00	\$ 246.00
Further Mathematics 3/4	Classroom consumable materials	\$8.00		\$ 8.00
	Photocopying	\$15.00		\$ 15.00
	Software Subscription - Ed Rolo		\$25.00	\$ 25.00
Further Mathematics 3/4 Total		\$23.00	\$25.00	\$ 48.00
Health & Human Development 3/4	Classroom consumable materials	\$15.00		\$ 15.00
	Photocopying	\$30.00		\$ 30.00
	Software Subscription - Ed Rolo		\$25.00	\$ 25.00
Health & Human Development 3/4 Total		\$45.00	\$25.00	\$ 70.00
History Revolutions 3/4	Classroom consumable materials	\$5.00		\$ 5.00
	Photocopying	\$8.00		\$ 8.00
	Software Subscription - Ed Rolo		\$25.00	\$ 25.00
History Revolutions 3/4 Total		\$13.00	\$25.00	\$ 38.00
Indonesian 3/4	Classroom consumable materials	\$10.00		\$ 10.00
	Photocopying	\$20.00		\$ 20.00
Indonesian 3/4 Total		\$30.00		\$ 30.00
Japanese 3/4	Classroom consumable materials	\$10.00		\$ 10.00

	Photocopying	\$20.00	\$	20.00
Japanese 3/4 Total		\$30.00	\$	30.00
Legal Studies 3/4	Classroom consumable materials	\$5.00	\$	5.00
	Photocopying	\$15.00	\$	15.00
	Software Subscription - Ed Rolo		\$25.00	\$ 25.00
Legal Studies 3/4 Total		\$20.00	\$25.00	\$ 45.00
Literature 3/4	Classroom consumable materials	\$52.00	\$	52.00
	Photocopying	\$30.00	\$	30.00
Literature 3/4 Total		\$82.00	\$	82.00
Mathematical Methods 3/4	Classroom consumable materials	\$8.00	\$	8.00
	Photocopying	\$15.00	\$	15.00
	Software Subscription - Ed Rolo		\$25.00	\$ 25.00
Mathematical Methods 3/4 Total		\$23.00	\$25.00	\$ 48.00
Media 3/4	Classroom consumable materials	\$60.00	\$	60.00
	Hire of Equipment	\$20.00	\$	20.00
	Photocopying	\$20.00	\$	20.00
	Software Subscription - Ed Rolo		\$25.00	\$ 25.00
Media 3/4 Total		\$100.00	\$25.00	\$ 125.00
Music Performance	Classroom consumable materials	\$0.00	\$	-
	Photocopying	\$30.00	\$	30.00
Music Performance Total		\$30.00	\$	30.00
Outdoor Education	Classroom consumable materials	\$15.00	\$	15.00
	Photocopying	\$20.00	\$	20.00
Outdoor Education Total		\$35.00	\$	35.00
Physical Education 3/4	Classroom consumable materials	\$20.00	\$	20.00
	Photocopying	\$20.00	\$	20.00
	Software Subscription - Ed Rolo		\$25.00	\$ 25.00
Physical Education 3/4 Total		\$40.00	\$25.00	\$ 65.00
Physics 3/4	Classroom consumable materials	\$15.00	\$	15.00
	Photocopying	\$15.00	\$	15.00

	Software Subscription - Ed Rolo		\$25.00	\$	25.00
Physics 3/4 Total		\$30.00	\$25.00	\$	55.00
Product Design & Tech: Textiles 3/4	Classroom consumable materials	\$130.00		\$	130.00
	Photocopying	\$15.00		\$	15.00
Product Design & Tech: Textiles 3/4 Total		\$145.00		\$	145.00
Product Design & Tech: Wood 3/4	Classroom consumable materials	\$215.00		\$	215.00
	Photocopying	\$15.00		\$	15.00
Product Design & Tech: Wood 3/4 Total		\$230.00		\$	230.00
Psychology 3/4	Classroom consumable materials	\$10.00		\$	10.00
	Photocopying	\$15.00		\$	15.00
	Software Subscription - Ed Rolo		\$25.00	\$	25.00
Psychology 3/4 Total		\$25.00	\$25.00	\$	50.00
Specialist Mathematics 3/4	Classroom consumable materials	\$8.00		\$	8.00
	Photocopying	\$15.00		\$	15.00
	Software Subscription - Ed Rolo		\$25.00	\$	25.00
Specialist Mathematics 3/4 Total		\$23.00	\$25.00	\$	48.00
Systems Engineering 3/4	Classroom consumable materials	\$220.00		\$	220.00
	Photocopying	\$20.00		\$	20.00
Systems Engineering 3/4 Total		\$240.00		\$	240.00
Visual Communication 3/4	Classroom consumable materials	\$100.00		\$	100.00
	Photocopying	\$20.00		\$	20.00
	Software Subscription - Ed Rolo		\$25.00	\$	25.00
	Student printing credit		\$40.00	\$	40.00
Visual Communication 3/4 Total		\$120.00	\$65.00	\$	185.00
Year 12 VCAL	Classroom consumable materials	\$15.00		\$	15.00
	In School Activities	\$70.00		\$	70.00
	Integrated Projects	\$50.00		\$	50.00
	Photocopying	\$15.00		\$	15.00
Year 12 VCAL Total		\$150.00		\$	150.00

GENERAL INFORMATION

College Contacts

Year Level	2021 Year Level Leader	2021 Year Level Coordinator	2021 Year Level Coordinator
Year 7	Jo Reeman	Alex Malligan	Fiona Richmond
Year 8	Adam Pirrie	Sian Jones	Kim Rattue
Year 9	Amanda Cruise	Lavonne Neal	Andrew Mock
Year 10	Amanda Windsor	Chanelle Jenkins	Chris Stucley
Year 11	Graham Howgate	Juley Karis	Vicky Hronopolous
Year 12	Grant Olarenshaw	Alex Canton	Michael Lamond

Year Level	2022 Year Level Leader	2022 Year Level Coordinator	2022 Year Level Coordinator
Year 7	Jo Reeman	Alex Malligan	Rachel Glynn
Year 8	Adam Pirrie	Cassie Darnett	Kim Rattue
Year 9	Sian Jones	Jenna Kennedy	Andrew Mock
Year 10	Amanda Windsor	Elise Ong	Chris Stucley
Year 11	Graham Howgate	Evangeline Romage	Josh Pratt
Year 12	Grant Olarenshaw	Kylie Oliver	Michael Lamond

For enquiries regarding payments

Please contact the General Office for any payment enquires:

Email: mornington.sc@edumail.vic.gov.au Or AccountsReceivable@mornsc.vic.edu.au,
Erin Dixon (Accounts Receivable) or Wendy Parkinson (Business Manager)

Parent Compass passwords resets

Please contact the General Office for Compass password resets.

IT Support

All Information Technology issues e.g., Student password resets, issues with laptops should be directed to

ITSupport@mornsc.vic.edu.au

College Policies

All College policies can be found on the College website and in the College Newsletter.

For example, Parent Payment Policy, Refund Policy, Mobile Phone, Attendance and Uniform Policies

<http://www.mornsc.vic.edu.au>

Student Absences

If your son/daughter is absent, please record via the Compass Portal. Alternatively contact the

Absence Line Phone :(03) 5970 0270

Term Dates 2022

Term 1	Monday 31st January 2022 Students start date Friday 28th January 2022 Teachers start date End of term date: 8 th April 2022
Term 2	26 th April 2022 to 24 th June 2022
Term 3	11 th July 2022 to 16 th September 2022
Term 4	3 rd October 2022 to 20 th December 2022

School Bus Program - 2022 Application

Email queries: schoolbuses@mornsc.vic.edu.au

Students wishing to access a seat on a **Department of Education school provided bus** must complete an application form annually and parents/ guardians must agree to the conditions of travelling (available upon confirmation of your seat) **and** if applicable, the payment of a fare (\$120) per term prior to travel.

Any application submitted after 3rd October 2021, will be considered a late application and will be processed after all other applications.

To submit an online application – please follow the link below:

<https://forms.office.com/r/YeWRxcYdfv>

*Please be advised that by submitting an application or having an allocated seat in previous years **does not** guarantee your son or daughter a seat on a school bus. Parents and guardians are responsible for getting their children to and from school.*

Written communication will be sent to families via (email or post) by the College during Term 4 to notify the outcome of your application.

To be eligible for a seat on a **Department of Education school provided bus** at no cost, a student must:

1. Attend their nearest Government school and reside 4.8km or more from the school.

Please note allocations are based on your current residential address as per your enrolment information.

If your son/daughter does not fit into the above eligible criteria they **may** be able to access the **Department of Education school bus service** after all eligible students are allocated a seat and upon payment of \$120 per term.

Please note – School Buses go in the direction of Mornington, Mount Martha, Somerville, Tyabb, Hastings, Redhill and Safety Beach – there are no buses that travel towards Mt Eliza/Frankston.

Public transport should be accessed if you live **within 1.6km** of the College or closer than the nearest school bus service.

Department of Education school bus service is not guaranteed, and your son/daughter may be placed on a waitlist, in order of eligibility, date of application, and ensuring all Department of Education processes and protocols have been addressed.

College Website

The College has comprehensive videos and how to guides on the website.

- Full Course Descriptors, as well as subject area explained in detail
- Enrolment enquiry form and information
- Links to Compass Portal and parents' guide
- News items
- Important Dates
- Virtual Tour
- Year 7 Transition Information
- Subscribe to our Newsletter
- Application for the Camps, Sports and Excursion Fund
- Wellbeing Team and information
- Links to the uniform details and our supplier PSW
- Links to Campion for ordering your booklists online
 - order online at www.campion.com.au
- Canteen menu
- Details on the Laptop program

BOOKLIST

For new supplies

CAMPION
EDUCATION

PSW
MAKING YOUR SCHOOL LOOK GREAT

- Uniform –
 - at <https://www.psw.com.au/schools/mornington-secondary-college.html> or .
1/22 Watt Road, Mornington VIC 3931 **Phone:** 03 9768 0346
- Second-hand Uniform and book sales
 - Available at the [Sustainable School Shop](#).
 - http://www.mornsc.vic.edu.au/uploaded_files/media/secondhand_textbooks_and_uniforms.pdf

<http://www.mornsc.vic.edu.au/>

DET Contacts

The Department provides advice and support to schools and parents in relation to the Parent Payments Policy and schools' parent payment arrangements.

If you have any queries in regard to parent payments, please call 1800 955 913 or email Parent.Payments@education.vic.gov.au

Exiting or not returning to Mornington Secondary College in 2022

It is essential that if your son/daughter is not returning to Mornington Secondary College in 2022, an Exit Form must be completed before the student's final day at the College.

Students transferring to another Secondary School are required to complete an Exit Form following their formal interview with their new school.

Students transitioning to TAFE or exiting the education system must attend a formal interview with the Pathways Team and complete Exit Forms. For students under 17 years of age, an application for a DET school exemption must be completed and approved before the student can leave school.

Without a completed Exit Form your son/daughter remains enrolled at the College and is expected to attend all classes. Please contact the General Office for Exit Forms.

Contact the Careers Office on 5970 0220 or email Careers@mornsc.vic.edu.au to book an Exit/Transition Meeting.

Parent Payments Policy (Department of Education)– one page overview



PARENT PAYMENTS POLICY ONE-PAGE OVERVIEW



FREE INSTRUCTION

- Schools provide students with free instruction and ensure students have free access to all items, activities and services that are used by the school to fulfil the standard curriculum requirements in Victorian Curriculum F-10, VCE and VCAL.
- Schools may invite parents to make a financial contribution to support the school.



PARENT PAYMENT REQUESTS

Schools can request contributions from parents under three categories:

Curriculum Contributions	Other Contributions	Extra-Curricular Items and Activities
Voluntary financial contributions for curriculum items and activities which the school deems necessary for students to learn the Curriculum.	Voluntary financial contributions for non-curriculum items and activities that relate to the school's functions and objectives.	Items and activities that enhance or broaden the schooling experience of students and are above and beyond what the school provides for free to deliver the Curriculum. These are provided on a user-pays basis.

- Schools may also invite parents to supply or purchase educational items to use and own (e.g. textbooks, stationery, digital devices).



FINANCIAL HELP FOR FAMILIES

- Schools put in place financial hardship arrangements to support families who cannot pay for items or activities so that their child doesn't miss out.
- Schools have a nominated parent payment contact person(s) that parents can have a confidential discussion with regarding financial hardship arrangements.



SCHOOL PROCESSES

- Schools must obtain school council approval for their parent payment arrangements and publish all requests and communications for each year level on their school website for transparency.

School Council Approval

This parent payment booklet was presented to School Council.

Mornington Secondary College School Council endorses and approves the school charges for the year (2022) as displayed in this booklet

Signed for and on behalf of School Council



Colin Mason dated 29th November 2021